



STHITHA

Nature Walk

MODERN LUXURY ROW HOUSES

@ Hoskote, Bengaluru



PRM/KA/RERA/1250/304/PR/210525/007766



10 YRS +

Business Excellence



400+

Happy Customers



10

Projects Completed



02

Ongoing Projects

03

New Upcoming Projects



DISCOVER EXCELLENCE WITH STHITHA GROUP

For over a decade, Sthitha Group has been a name synonymous with trust, integrity, and excellence in real estate. With more than ten successful projects under our belt, we specialize in creating high-quality residential, commercial, and mixed-use developments that stand the test of time. Our strong portfolio reflects our dedication to shaping vibrant communities and delivering modern living spaces.



CHOOSE STHITHA GROUP
—WHERE YOUR DREAMS FIND A HOME.

MODERN SOLUTIONS & EXPERT CONSULTATION



Premium Projects



Trust & Integrity



Quality Specs



Nature Walk

ENTRANCE

ROW HOUSE ELEVATION

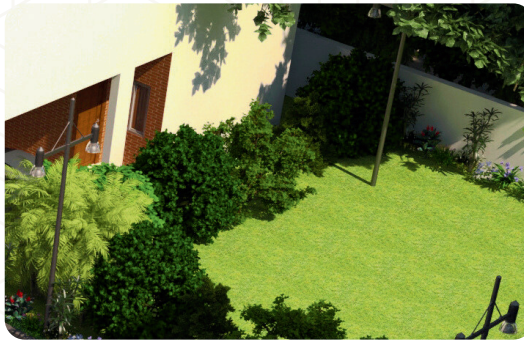


PROJECT OVERVIEW

A private retreat featuring only 13 one-of-a-kind exquisite Row houses with private backyards.



GATED COMMUNITY



PRIVATE BACKYARD



PREMIUM SPECS



EXCLUSIVE CLUB HOUSE



24/7 CCTV SECURITY



PRM/KA/RERA/1250/304/PR/210525/007766

Sthitha Nature Walk
Behind MVJ Medical college,
Hoskote, Bengaluru



MASTER PLAN

With an emphasis on spaciousness, exquisite design, and modern conveniences, our vision is to create a sanctuary that combines elegance with comfort.





ENTRANCE VIEW



EAST FACING UNITS

East Facing homes with spacious internal layout with a private backyard and top specifications.



4

Bedrooms



4

Bathrooms



1

Terrace



1

Backyard



1

Balcony

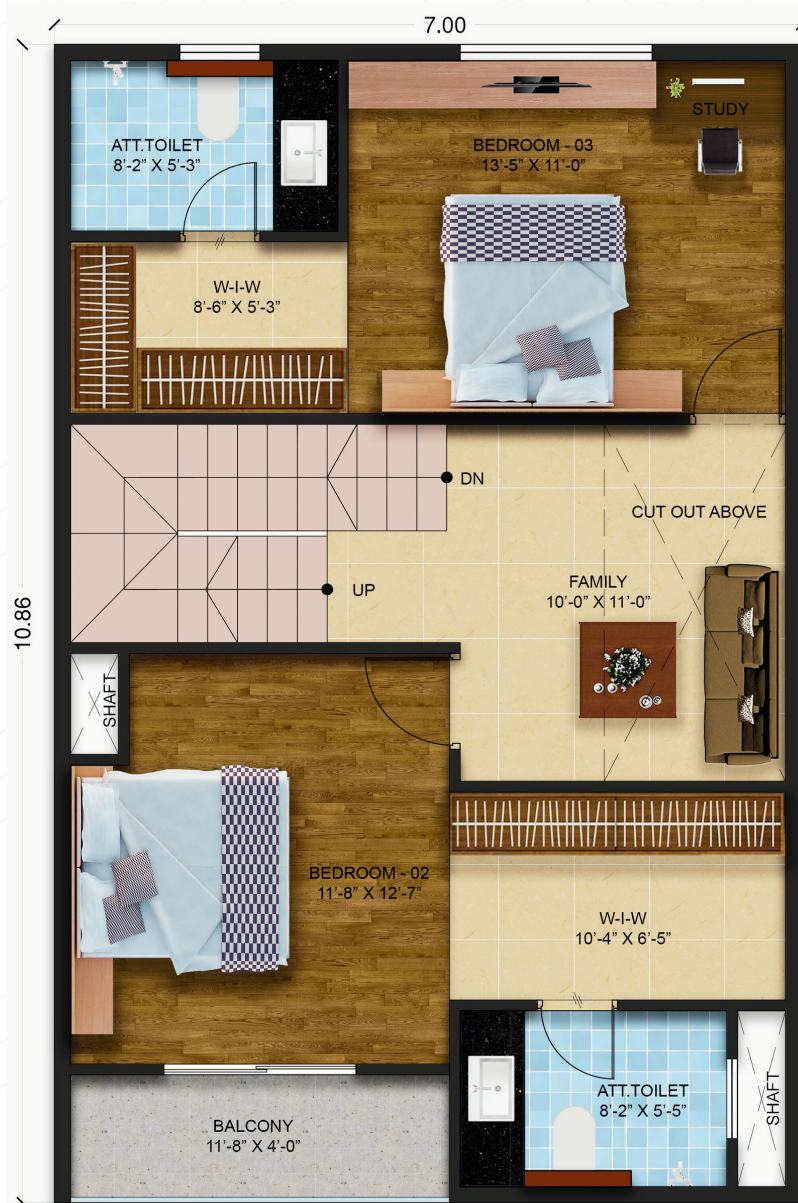


2300 Sq. Ft

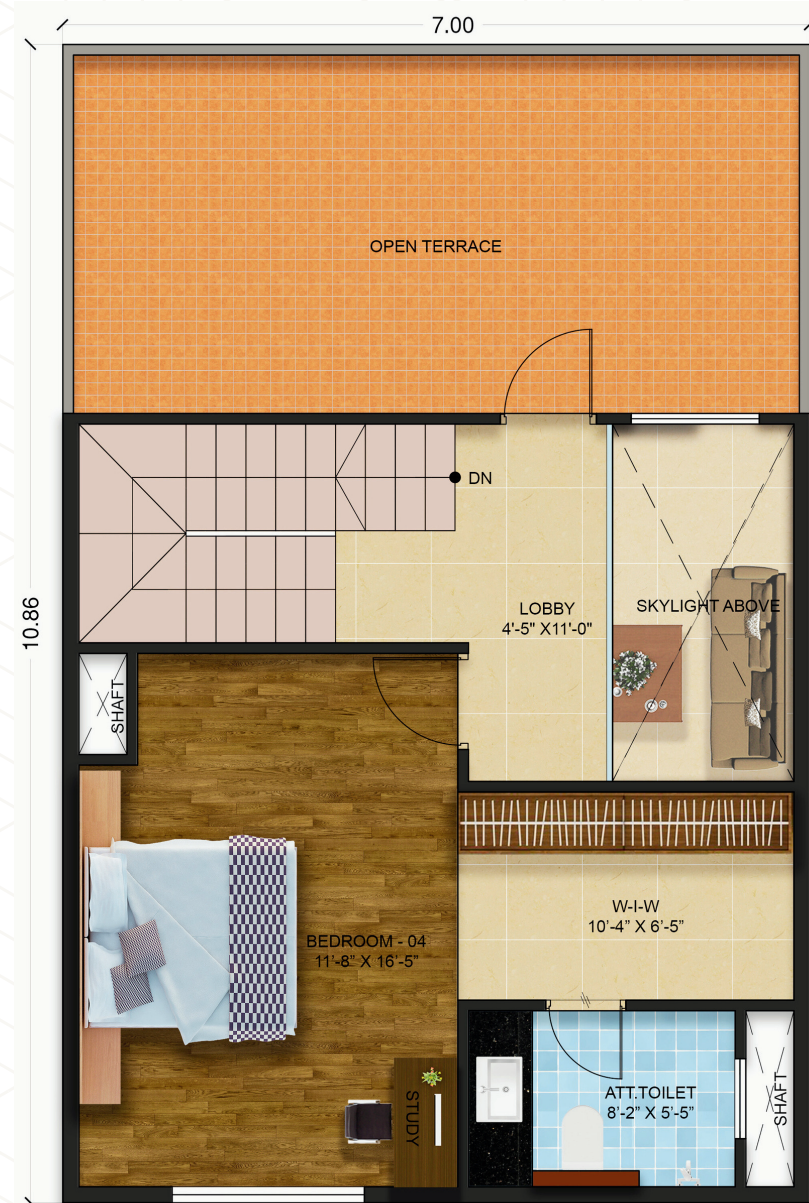
V1, V2, V3, V4



V1, V2, V3, V4



FIRST FLOOR



SECOND FLOOR



NORTH FACING UNITS



2300 Sq. Ft

V6, V7, V8, V9



GROUND FLOOR



FIRST FLOOR



SECOND FLOOR



WEST FACING UNITS



2400 Sq. Ft

V11, V12



GROUND FLOOR



FIRST FLOOR



SECOND FLOOR

CLUB HOUSE & AMENITIES

Amenities carefully curated to elevate your lifestyle with spaces designed for relaxation, recreation, and community living.



Children's Play Area



Kids Pool Area



Multi-Purpose Court



Seating Area



Multipurpose Hall



Solar Street Lights



UPS Power to every unit



24 Hours security



24 Hours water facility



Rain Water Harvesting



CCTV Surveillance



Capsule Lift Option Provision



Cricket Turf Pitch



STHITHA Active Link

CLUB HOUSE

CLUB HOUSE

SPECIFICATIONS



VILLA SPECS



STRUCTURES

RCC framed structure with seismic compliances resistance.



WALLS

Common wall size 8 Inch thickness between villas , 6" thick solid cement blocks for external walls and 4" thick solid cement blocks for internal walls Plastering double coat sponge finish for external , internal walls with neeru finish



DOORS

Main Door : Moulded Teak Skin Shutter. Internal doors Teakwood Frame with Flush Doors and bathroom frame and doors with WPC



FLOORING

Premium quality vitrified flooring inside Villa 4'x2' tiles, Granite flooring for staircase, and Master bedroom will be wooden flooring .



TOILETS

Ceramic glazed dado up to 7 ft height and antiskid tiles for flooring C.P. fittings of Hindware / Cera / Jaguar or equivalent sanitary fittings .



ELECTRICAL

Concealed copper wiring of Anchor or equivalent, Reputed brand modular switches and sockets.



KITCHEN

Granite Kitchen platform with stainless steel sink with 2' height glazed tile dado above cooking platform



PAINTING

Plastic emulsion paint for interiors with 2 coats wall putty water proof emulsion paint for exteriors. Enamel paint for grills



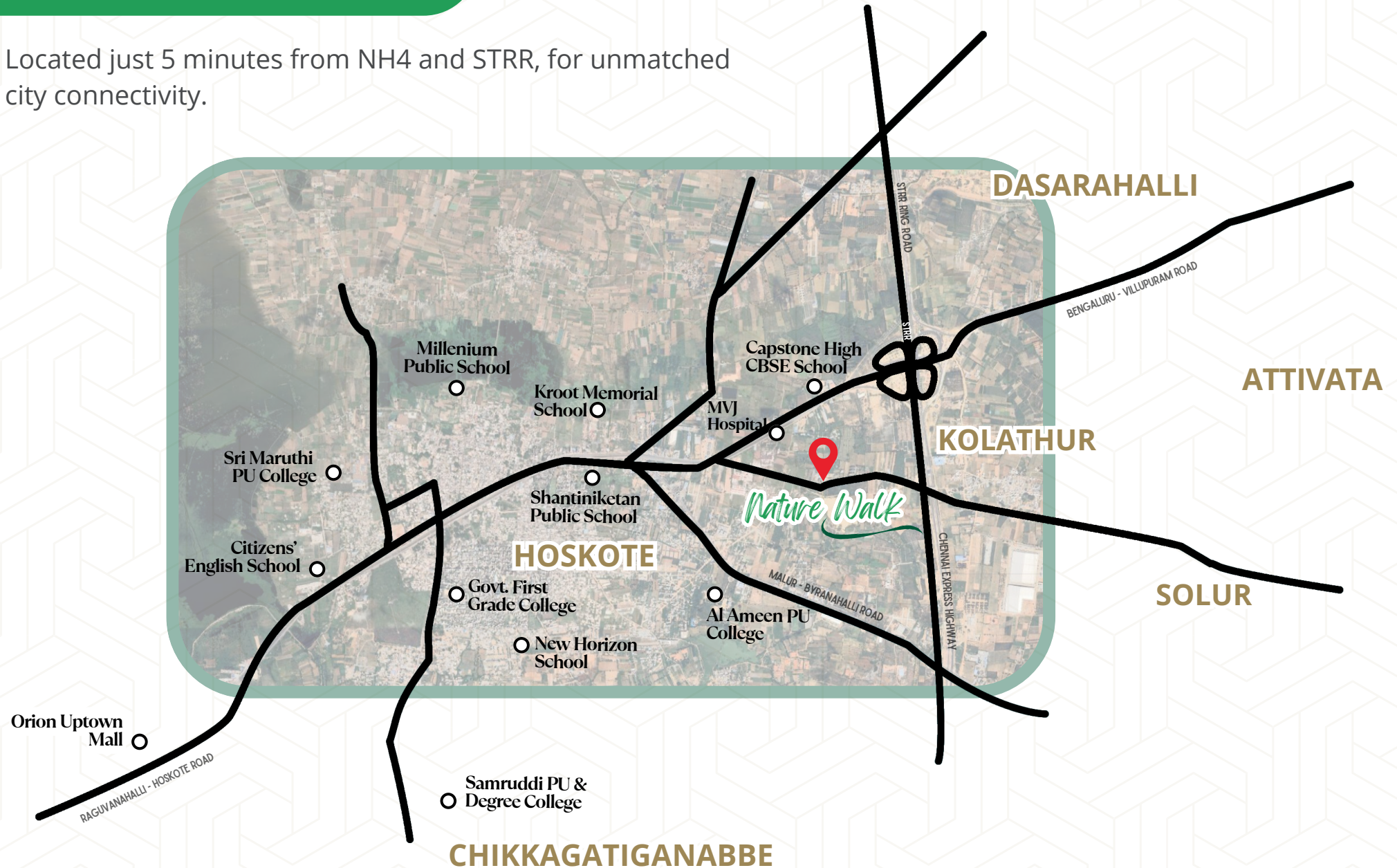
WINDOWS

3 track Eternia Aluminium windows with safety grills.

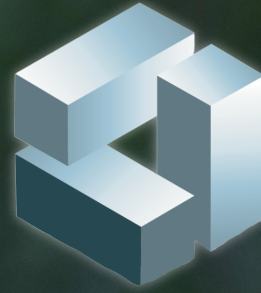


LOCATION

Located just 5 minutes from NH4 and STRR, for unmatched city connectivity.







STHITHA

Nature Walk

MODERN LUXURY ROW HOUSES
@ Hoskote, Bengaluru

Strategic Partners:



AFFINITY INFRA SPACE

CASATRANCE
Your Property Our Priority



acorn signitive

Architect:

STHITHA INFRA PVT LTD

No.9, Teja Residency – 3,
Flat No.405 and 406, 4th Floor,
Coconut Garden, Ayyappa Nagar, K.R.Puram,
Bengaluru – 560 036

+91 90713 43569

www.sthithagroup.com

NOTE: The Project “Nature Walk” is registered with Karnataka RERA under the Registration No.: PRM/KA/RERA/1250/304/PR/210525/007766 and can be viewed at <http://rera.karnataka.gov.in/> This brochure is conceptual and has been prepared based on the inputs provided by the Project Architect and not a legal offering. This may vary during execution. The Promoter reserves the right to change, alter, add, or delete any of the specifications mentioned herein based on site conditions and construction exigencies without prior permission or notice. The external colour schemes and detailing of landscape may vary as may be suggested by the Architect considering the site conditions. The furniture shown in the plans is only for the purpose of illustrating a possible layout and does not form a part of the offering or specifications.